

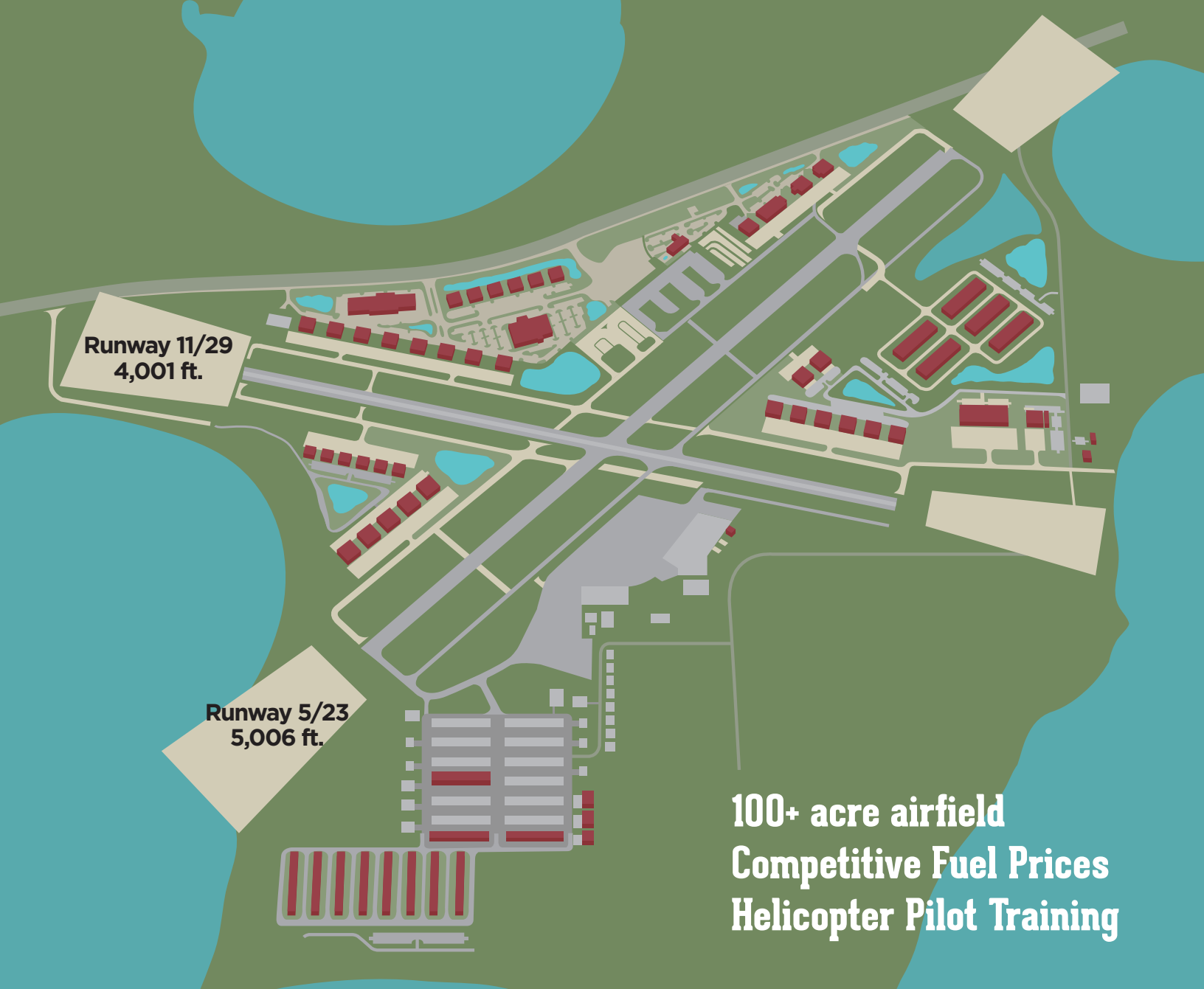
winter haven

florida, USA

municipal airport

gilbert field

The Winter Haven Municipal Airport is a General Aviation Facility that embraces safety, quality, growth, and diversity; creating an environment that supports prosperity through collaborative efforts of the public and private sectors; thus, a great place to work and play.



100+ acre airfield
Competitive Fuel Prices
Helicopter Pilot Training

Your Natural Landing Zone

Winter Haven, Florida is home to thousands of manufacturing and logistics jobs, a 1,250 acre rail-served intermodal terminal and logistics center, a fiber-connected downtown business hub, and LEGOLAND Florida Resort.

The Airport is located with direct access to Interstate 4 and more than 7 million people within 60 miles. Its development assets include more than 100 acres of landside and airside sites, as well as two runways and two lakes for seaplanes.



An array of development and investment incentives may be available for qualifying projects, however our greatest incentives are our location, flying weather, quality of workforce, quality of life and more...

- Sunny Lakeside Lifestyle
- LEGOLAND Florida Resort®
- Disney World Resorts®
- NASA
- SUN 'n FUN Int'l Fly-In Expo®
- Orlando and Tampa
- Beaches, Sun and Sand





Seaplane Capitol of the World

Brown's Seaplane Base

Brown's Seaplane Base was started in 1963 by Jack Brown. Since 1963, Brown's has trained over 17,000 seaplane pilots from all over the world. Mr. Brown chose the central Florida area as the location for his base because of its abundance of freshwater lakes and superb flying weather.



The Seaplane Pilots Association selected Winter Haven to be its home.

The worldwide headquarters will be lakefront with hard packed surfaces and pilot-operated fences and gates for access to the ramps and docks. The headquarters will include a 10,000 sf. hangar, offices, interactive workshops and educational displays.

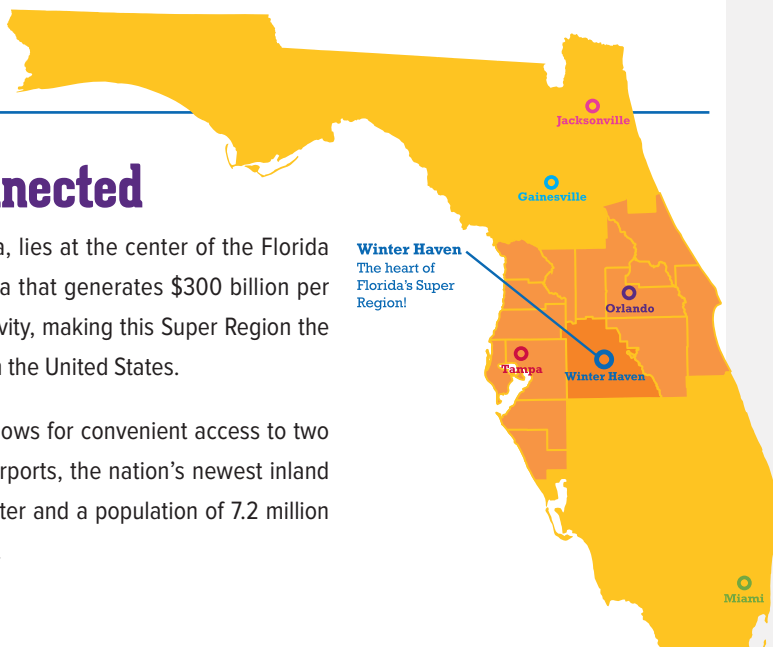


Super Connected

Winter Haven, Florida, lies at the center of the Florida Super Region, an area that generates \$300 billion per year in economic activity, making this Super Region the 9th largest economy in the United States.

Our prime location allows for convenient access to two major international airports, the nation's newest inland port and logistics center and a population of 7.2 million within an hour's drive.

Winter Haven
The heart of
Florida's Super
Region!



Ready to Soar

The Polk County School Board, Polk State College and Florida Polytechnic University are prime examples of educational institutions working directly with the private sector to conduct research and training that meets the needs of industry.

Central Florida Aerospace Academy

Through a combination of relevant academic experiences, collaboration with the local aerospace community and an aviation focus, the Central Florida Aerospace Academy provides high school students with a rigorous college preparatory program that will maximize the potential for successful careers in aviation.

The programs include:

- Aerospace Technology
- Airframe and Powerplant (Airplane Maintenance)
- Airforce JROTC
- Avionics
- Engineering

Polk State College

Polk State College provides professional collegiate training and experience for students desiring careers in the Aerospace industry. Students at Polk State may choose to pursue an AS or BS degree in these concentrations:

- AS, Professional Pilot License
- AS, Aerospace Administration
- AS, Aviation Maintenance
- BS, Aerospace Sciences

Florida Polytechnic University

Florida Poly, the only STEM focused university in Florida offers programs providing enhanced research.

FAA Identifier: GIF
Lat/Long: 28-03-46.5000N / 081-45-11.9000W
28-03.775000N / 081-45.198333W
28.0629167 / -81.7533056
(estimated)
Elevation:
145.3 ft. / 44.3 m (surveyed)
Variation:
04W (2000)
From city:
3 miles NW of WINTER HAVEN, FL
Time zone:
UTC -4 (UTC -5 during Standard Time)



Winter Haven Economic
Development Council
401 Avenue B NW
Winter Haven, FL 33881
U.S.A.

+1 863.837.5280

www.whedc.com
bruce@whedc.com
facebook.com/WHEDC